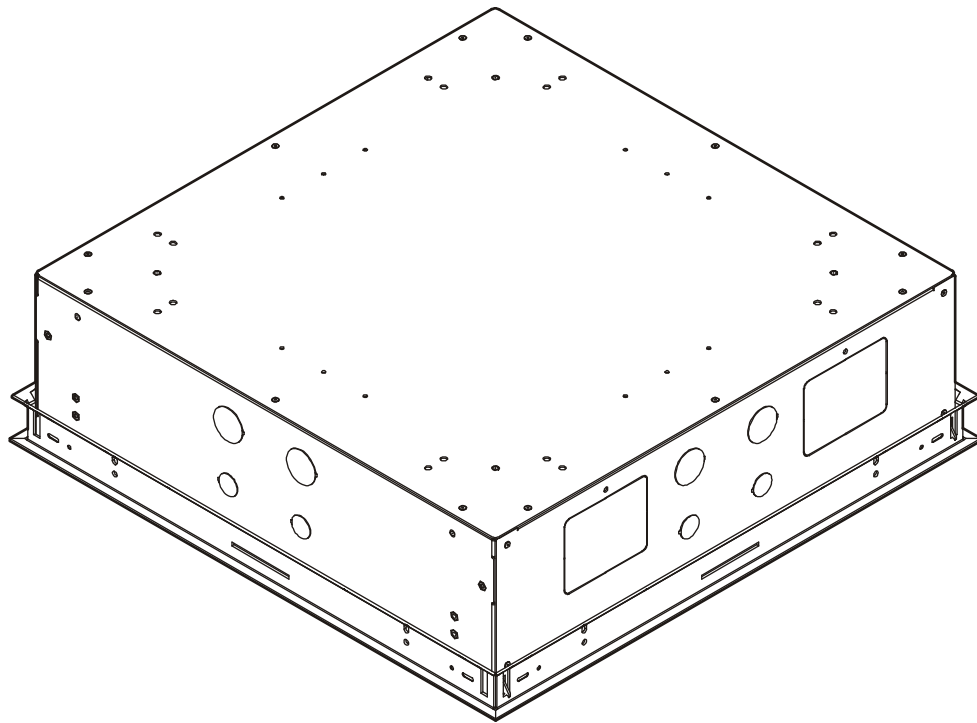

INSTALLATION INSTRUCTIONS



Ceiling Tile Storage Kit

DISCLAIMER

Milestone AV Technologies and its affiliated corporations and subsidiaries (collectively "Milestone"), intend to make this manual accurate and complete. However, Milestone makes no claim that the information contained herein covers all details, conditions or variations, nor does it provide for every possible contingency in connection with the installation or use of this product. The information contained in this document is subject to change without notice or obligation of any kind. Milestone makes no representation of warranty, expressed or implied, regarding the information contained herein. Milestone assumes no responsibility for accuracy, completeness or sufficiency of the information contained in this document.

Chief® is a registered trademark of Milestone AV Technologies. All rights reserved.



WARNING: Use this mounting system only for its intended use as described in these instructions. Do not use attachments not recommended by the manufacturer.



WARNING: Never operate this mounting system if it is damaged. Return the mounting system to a service center for examination and repair.



WARNING: Do not use this product outdoors.

--SAVE THESE INSTRUCTIONS--



IMPORTANT SAFETY INSTRUCTIONS



WARNING: A WARNING alerts you to the possibility of serious injury or death if you do not follow the instructions.



CAUTION: A CAUTION alerts you to the possibility of damage or destruction of equipment if you do not follow the corresponding instructions.



WARNING: Failure to read, thoroughly understand, and follow all instructions can result in serious personal injury, damage to equipment, or voiding of factory warranty! It is the installer's responsibility to make sure all components are properly assembled and installed using the instructions provided.

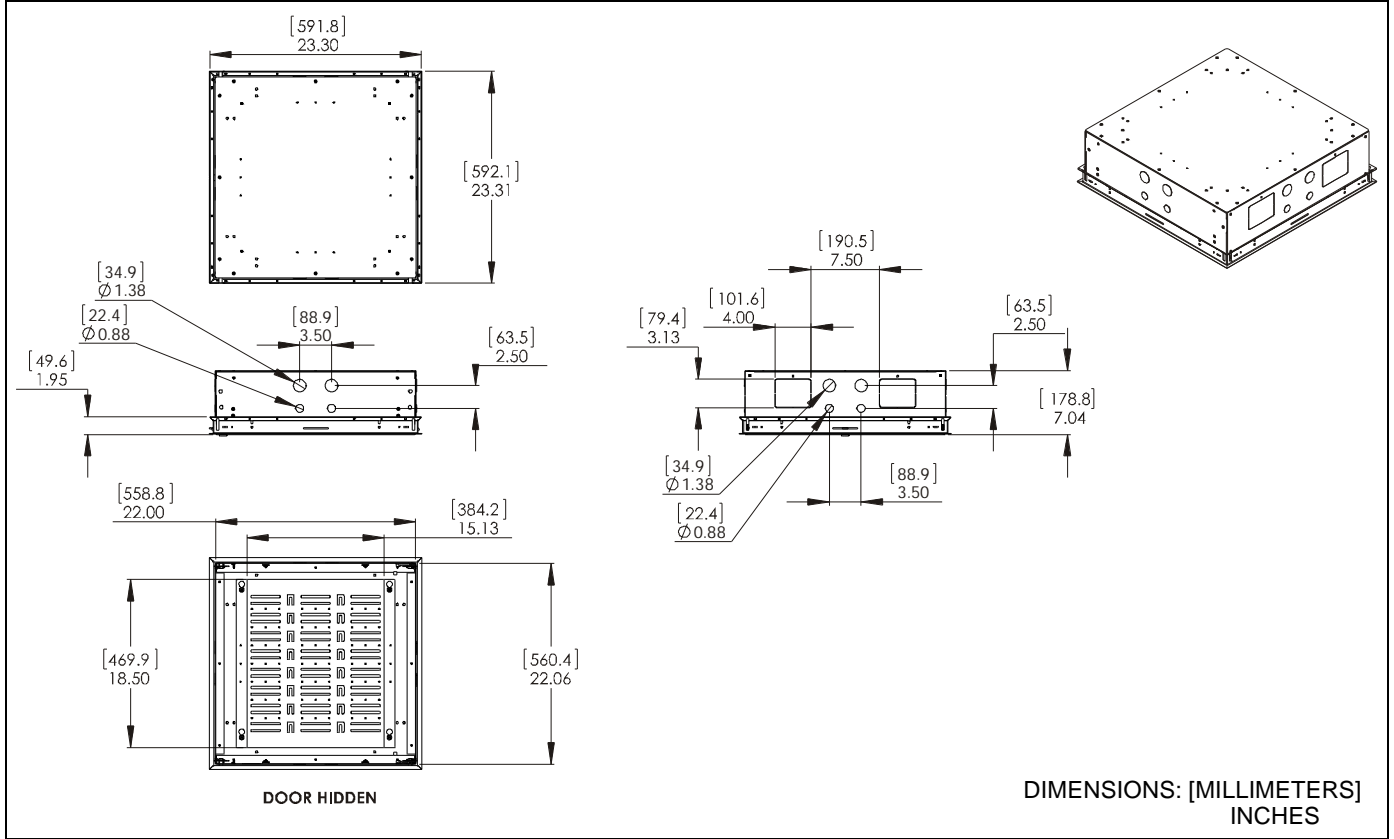


WARNING: Failure to provide adequate structural strength for this component can result in serious personal injury or damage to equipment! It is the installer's responsibility to make sure the structure to which this component is attached can support five times the combined weight of all equipment. Reinforce the structure as required before installing the component.



WARNING: Exceeding the weight capacity can result in serious personal injury or damage to equipment! It is the installer's responsibility to make sure the combined weight of all components and the CMS490 does not exceed 50 lbs (22.7 kg).

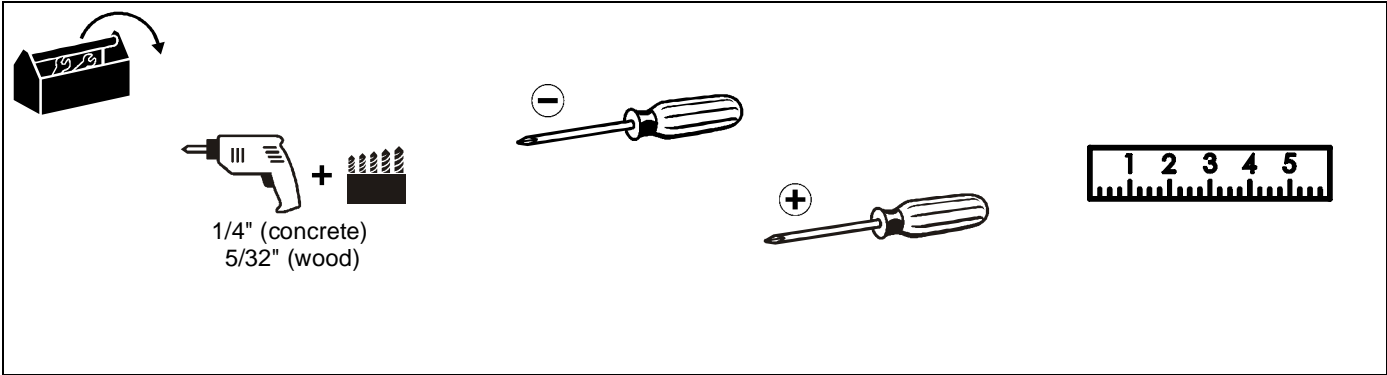
DIMENSIONS



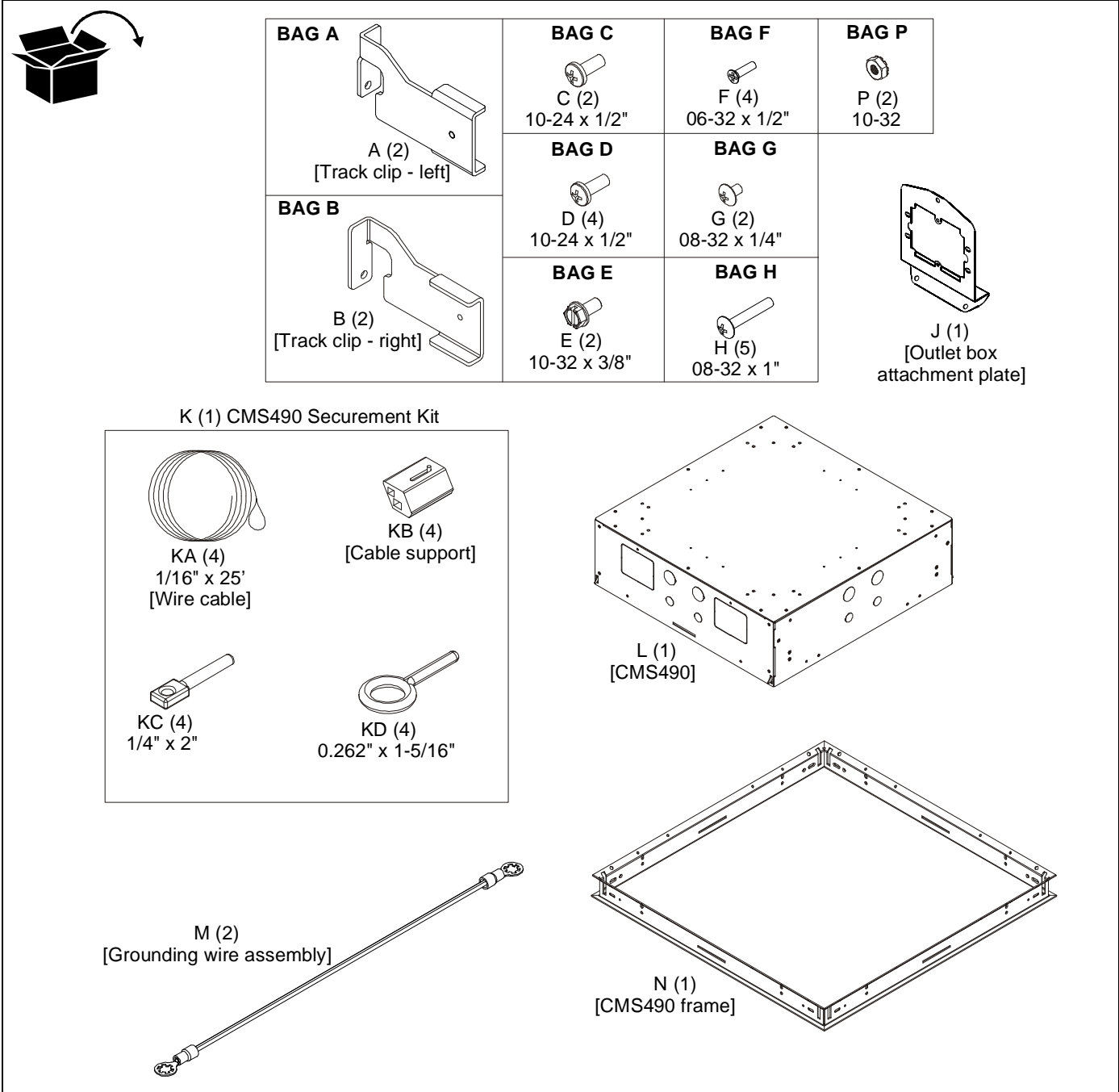
LEGEND

	Tighten Fastener Apretar elemento de fijación Befestigungsteil festziehen Apertar fixador Serrare il fissaggio Bevestiging vastdraaien Serrez les fixations		Drill Hole Perforar Bohrloch Fazer furo Praticare un foro Gat boren Percez un trou
	Loosen Fastener Aflojar elemento de fijación Befestigungsteil lösen Desapertar fixador Allentare il fissaggio Bevestiging losdraaien Desserrez les fixations		By Hand A mano Von Hand Com a mão A mano Met de hand À la main
	Phillips Screwdriver Destornillador Phillips Kreuzschlitzschraubendreher Chave de fendas Phillips Cacciavite a stella Kruiskopschroevendraaier Tournevis à pointe cruciforme		Open-Ended Wrench Llave de boca Gabelschlüssel Chave de bocas Chiave a punte aperte Steeksleutel Clé à fourche

TOOLS REQUIRED FOR INSTALLATION



PARTS



PREPARING FOR INSTALLATION

Installation Requirements

The CMS490 has been designed to be mounted recessed into a suspended ceiling consisting of 2' x 2' ceiling tiles and secured by a WireVice system.

Preparing Framework

1. Attach track clips [2 left (A), 2 right (B)] one at each corner of the CMS490 frame (N) using one 06-32 x 1/2" Phillips flat head screw (F) on each clip. (See Figure 1)

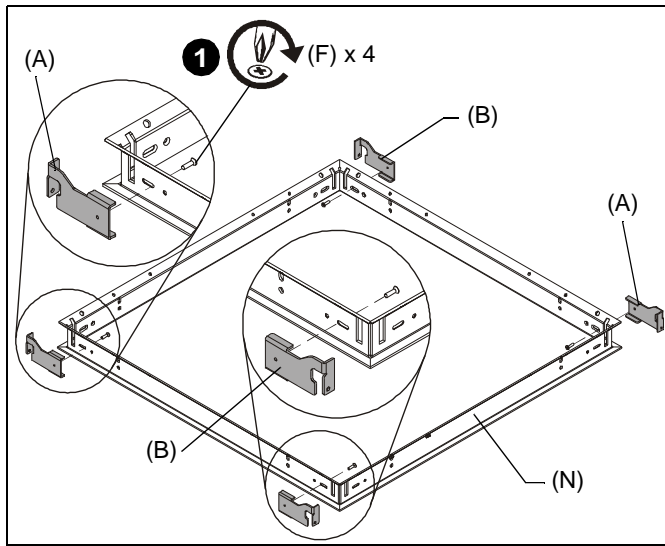


Figure 1

Installing CMS490 Framework

1. Remove one 2 ft x 2 ft tile from ceiling.
2. Insert CMS490 frame (N) with attached brackets into the empty ceiling space. (See Figure 2)
3. Set CMS490 frame (N) over top of ceiling framework, hooking each track clip (A and B) onto the ceiling framework. (See Figure 3)
4. Secure CMS490 frame (N) to ceiling framework using one 10-24 x 1/2" Phillips head screw (D) through each track clip (D) at each corner. (See Figure 3)

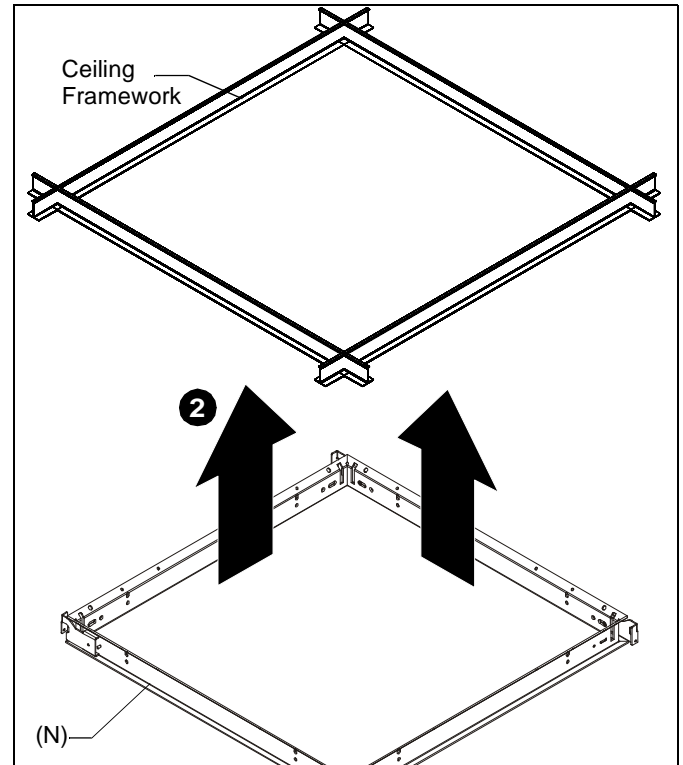


Figure 2

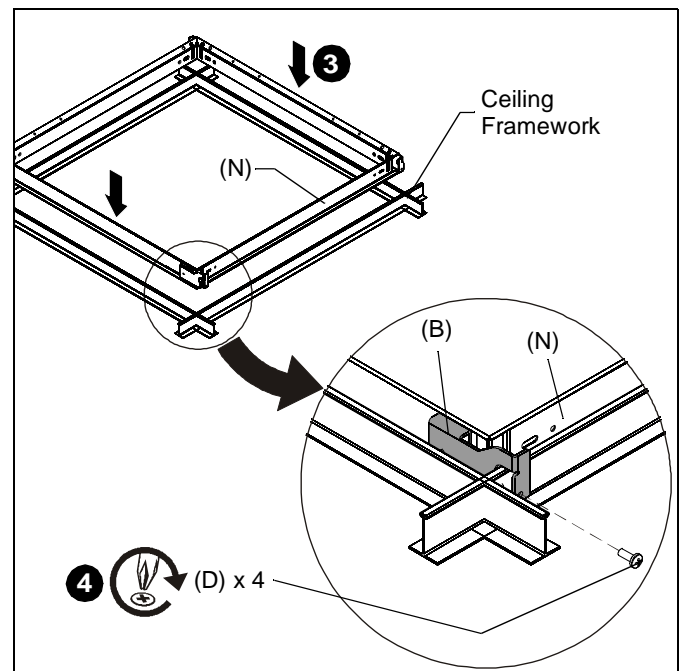


Figure 3

Securing CMS490 Frame to Ceiling Structure

1. Examine ceiling structure (concrete, steel truss, or wood) above CMS490 frame (N) to identify four support cable anchor locations. Each location should be approximately 15° outside of support holes in CMS490 frame (N). Mark locations with pencil. (See Figure 4).

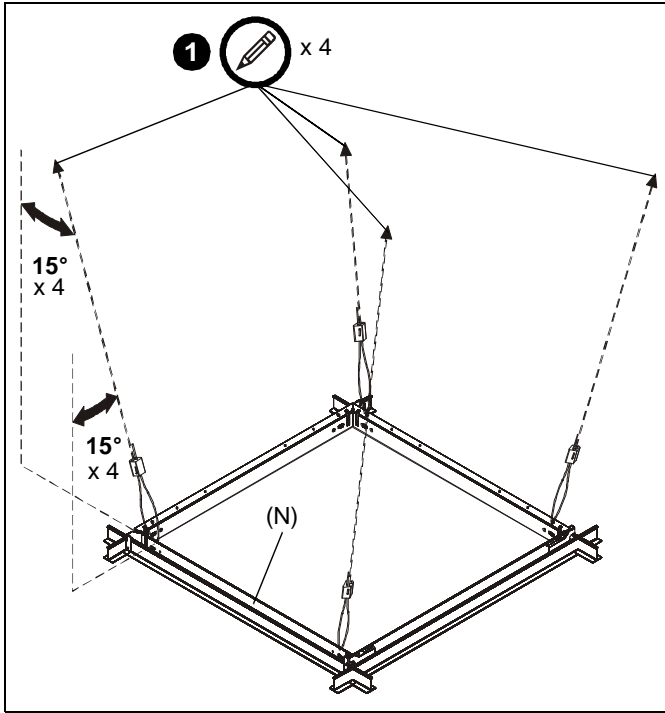


Figure 4

Solid Concrete Ceiling Structure



WARNING: Anchors must be installed into structurally sound solid concrete with a minimum thickness of 1.75" (44.5mm) or greater. Installation into hollow concrete block, mortar, or concrete that exhibits cracking, spalling, or other defects may result in failure of anchor and serious personal injury or damage to equipment!

1. Drill 1/4" diameter x 1-1/8" deep pilot hole at each marked cable anchor support location. Ensure hole is at least 2-1/2" from nearest concrete edge. Remove debris from hole. (See Figure 5)

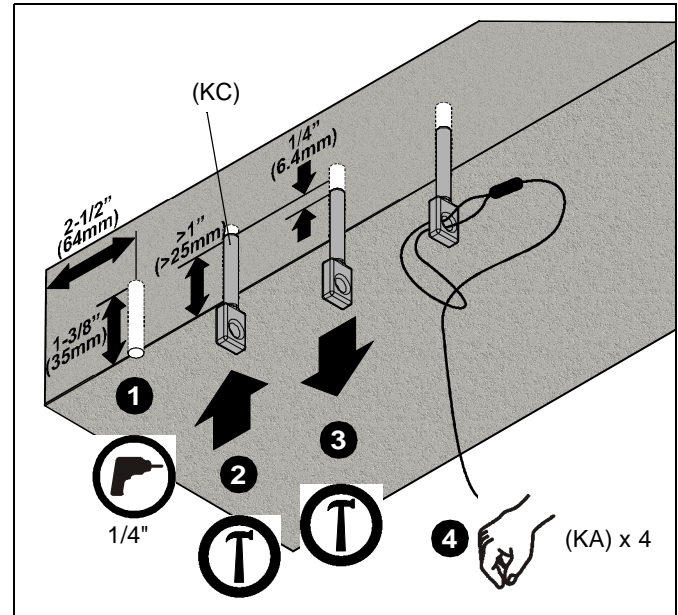


Figure 5

2. Tap anchor (KC) into each hole to a depth of at least 1". (See Figure 5)



WARNING: Failure to properly set anchor may result in failure of anchor and serious personal injury or damage to equipment!

3. Using claw portion of hammer, set each anchor (KC) by pulling it out of hole approximately 1/4". (See Figure 5)
4. Insert portion of manufactured loop on cable (KA) through hole in anchor (KC), and insert end of cable (KA) through loop. Repeat for 3 remaining support locations. (See Figure 5)

Steel Truss Ceiling Structure

1. Route end of cable (KA) over truss at marked cable anchor support location and then through cable loop. Repeat for 3 remaining support locations. (See Figure 6)

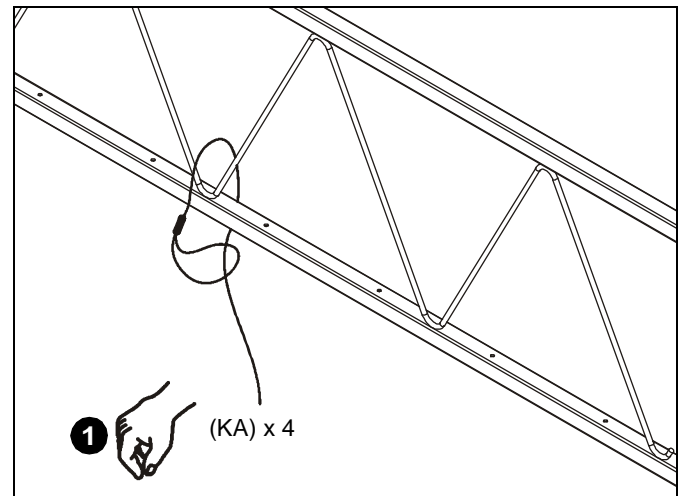


Figure 6

Wood Ceiling Structure



WARNING: Anchors must be installed into wood with a minimum thickness of 1-1/2" (38.1 mm) or greater.

1. Drill a 5/32" diameter x 1-1/2" deep pilot hole at each marked cable anchor support location. Ensure hole is at least 5/8" from nearest wood edge. Remove debris from hole. (See Figure 7)

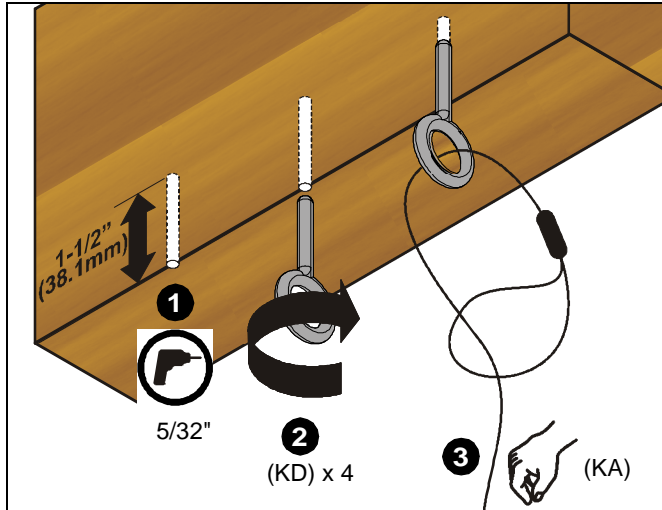


Figure 7

2. Fully thread eye lag (KD) into each hole. (See Figure 7)
3. Route end of cable (KA) through eye lag (KD) and then through cable loop. Repeat for 3 remaining support locations. (See Figure 7)

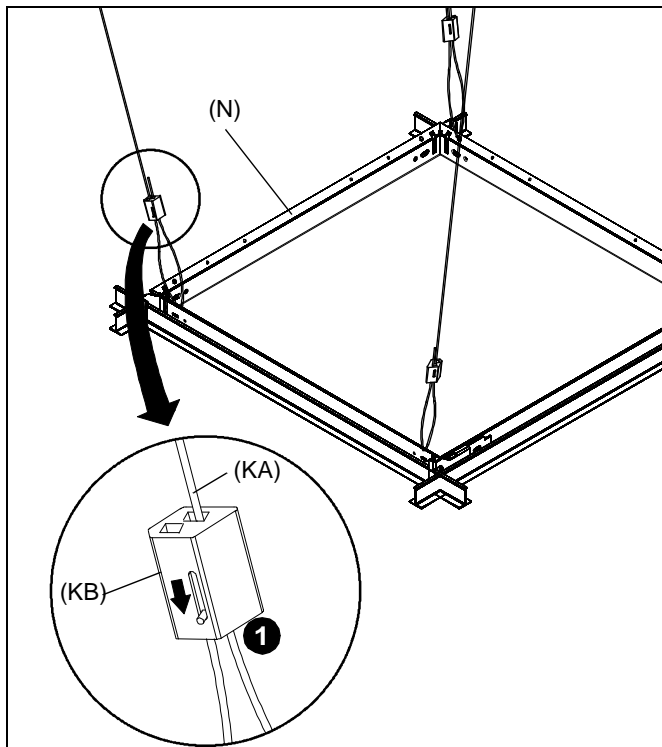


Figure 8

Installing Cable to CMS490 Frame



CAUTION: Failure to properly tension cables (KA) may result in damage to ceiling tile framework.

1. Thread each cable (KA) completely through cable lock (KB), corresponding hole in corner of CMS490 frame (N), and completely through opposite side of cable lock (KB) (See Figure 8).
2. Adjust cable tension until CMS490 frame (N) is supported *entirely and evenly* by all four support cables, but not so tight as to distort ceiling tile framework.



CAUTION: Cable lock (KB) will allow cable to enter from only one direction per side, indicated by arrows on lock. Depress spring loaded pins on cable lock (KB) to release cable tension.

Installing Electrical Box and Outlet

1. Install Listed electrical box (not included) to outlet box attachment plate (J).
2. Install the plate (J) with attached electrical box onto the CMS490 frame (N) using two 8-32 x 1/4" Phillips screws (G). (See Figure 9)

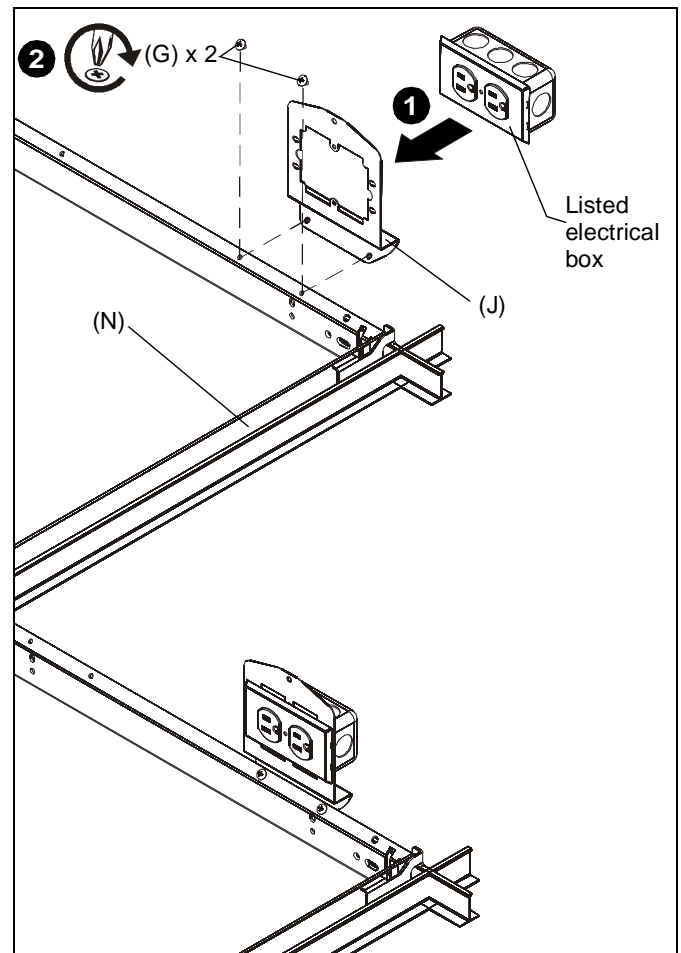


Figure 9

Placing CMS490 Into Ceiling Structure

1. Orient CMS490 so that the electrical opening lines up with the outlet box attachment plate (J) on the CMS490 frame. (See Figure 10)
2. Lift CMS490 (L) into place through the CMS490 frame (N). (See Figure 10)
3. Lower onto CMS490 frame, carefully lining up outlet box attached to CMS490 frame with opening in CMS490. (See Figure 11)
4. Secure the CMS490 (L) to the CMS490 frame (N) using four 8-32 x 1" Phillips head screws (H), two on each side of the CMS490. (See Figure 11)
5. Secure the outlet box attachment plate (J) to the CMS490 using one 8-32 x 1" Phillips head screw (H). (See Figure 11)

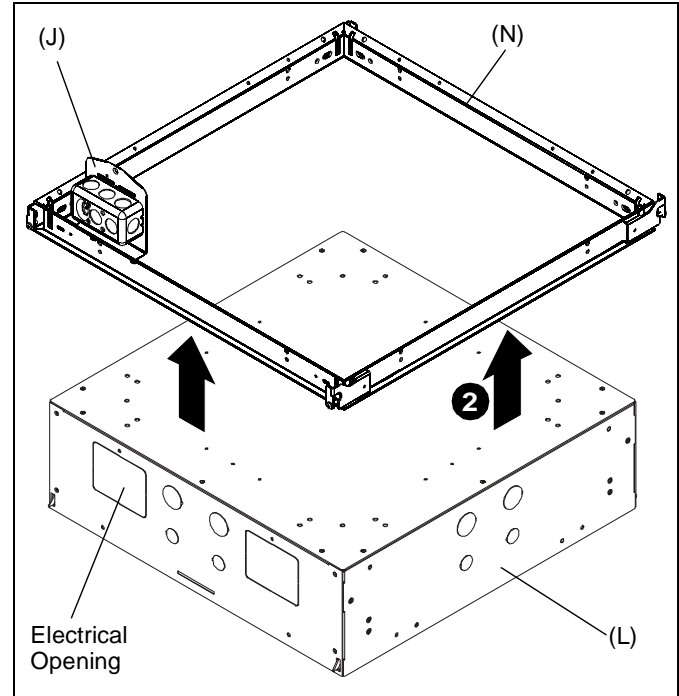


Figure 10

NOTE: Ensure that there are four audible clicks--each corner hook "clicking" into place onto the frame. (See Figure 11)

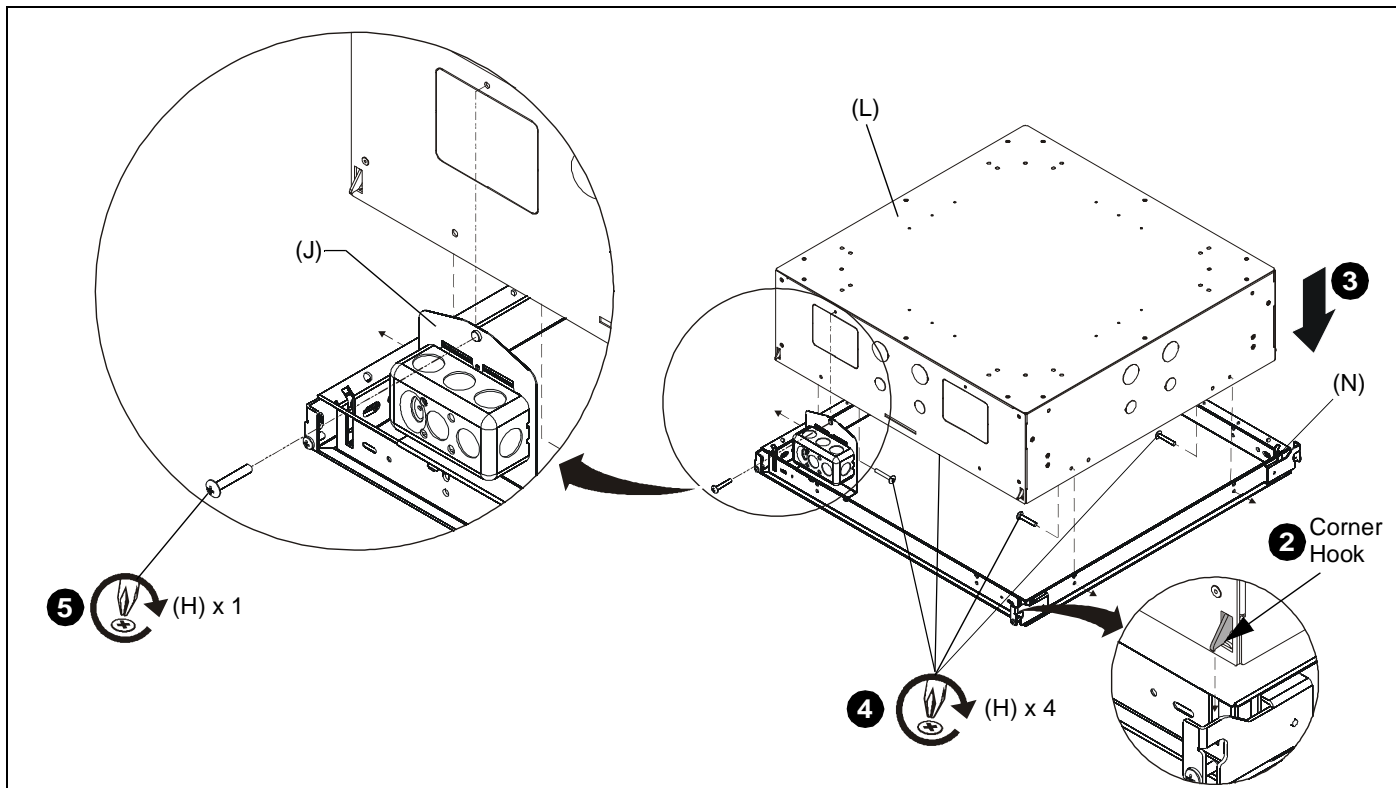


Figure 11



WARNING: IMPROPER INSTALLATION CAN LEAD TO KIT FALLING CAUSING SEVERE PERSONAL INJURY OR DAMAGE TO EQUIPMENT! It is the installers responsibility to make certain the structure to which the kit is being mounted is capable of supporting five times the weight of the kit and all attached equipment. Reinforce the structure as required before installing the kit.

NOTE: The following instructions assume a suitable mounting structure and surface exists prior to installation.

IMPORTANT ! : This kit must be grounded. If there is a malfunction or break down of any components, grounding provides a path of least resistance for electric current to reduce the risk of electric shock.

Grounding Instructions

This product must be connected to a grounded metal, permanent wiring system, and must be properly installed and grounded in accordance with all local codes and ordinances.

This product is suitable for use in Other Environmental Air Spaces in Accordance with Section 300.22(C) of the National Electrical Codes, 2008.

1. Attach one of the grounding wires (M) using one 10-32 grounding nut (P) between the door and the CMS490 box at one of the points marked with grounding labels. (See Figure 12)
2. The other grounding wire (M) should be attached between the removable tray and the CMS490 box using one 10-32 grounding screw (E) in desired location on removable tray and one 10-32 grounding nut (P). (See Figure 13)

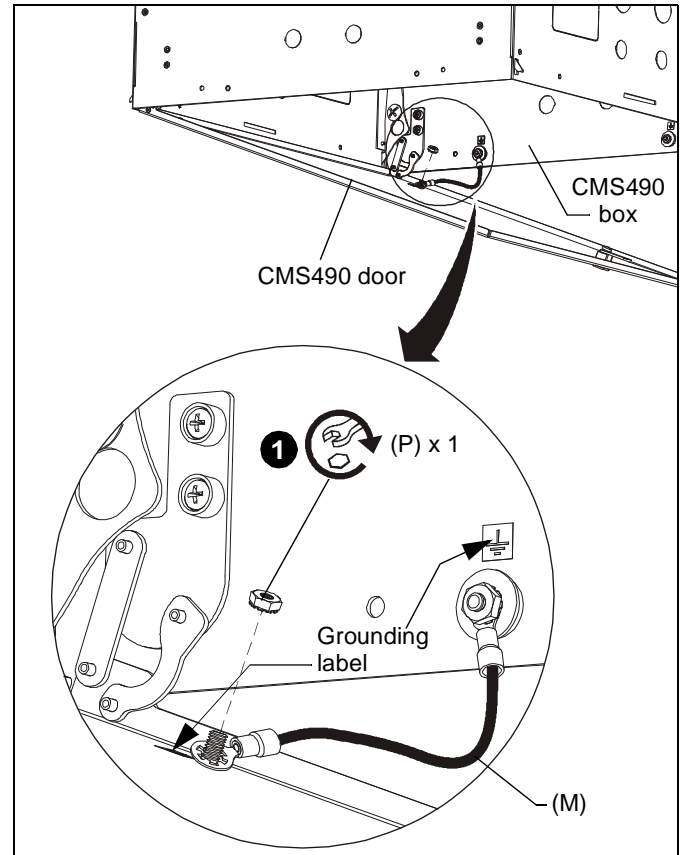


Figure 12

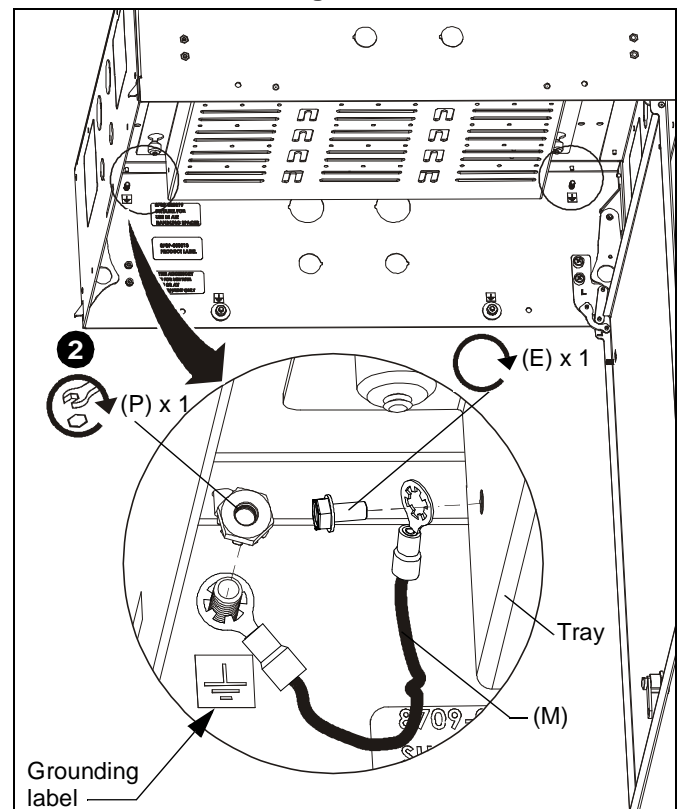


Figure 13



WARNING: RISK OF ELECTROCUTION! All electrical wiring required for installation should be installed by a qualified electrician.

IMPORTANT ! : The appropriate outlet being installed must be the grounding type and properly grounded in accordance with all local codes and ordinances.

3. Wire outlet into junction box in accordance with all local codes and ordinances.

Adding Components

1. Open and lower door on CMS490.
2. Loosen, but do NOT remove, four thumb nuts on component tray. (See Figure 14)
3. Slide tray and lower to remove from CMS490. (See Figure 14)

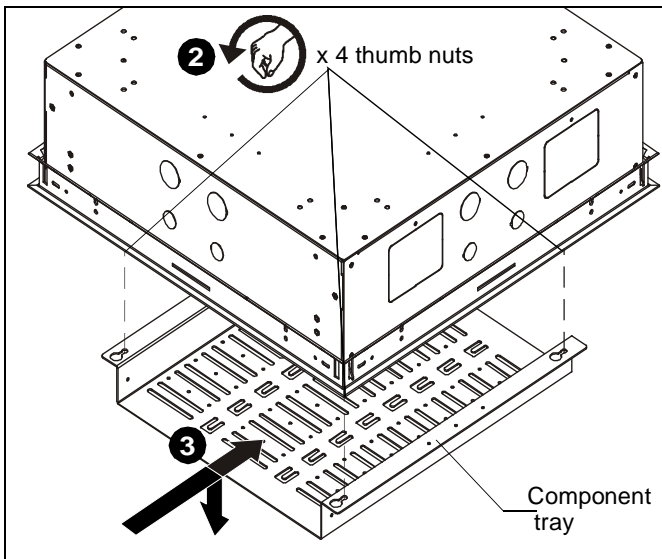


Figure 14

4. Add components to component tray.
5. Lift component tray to CMS490, ensuring all power and signal wires and cables are properly installed on the tray. (See Figure 15)
6. Slide component tray to narrow end of thumb nut openings.
7. Fasten tray into place by tightening four thumb nuts.
8. Close CMS490 door and lock in place.

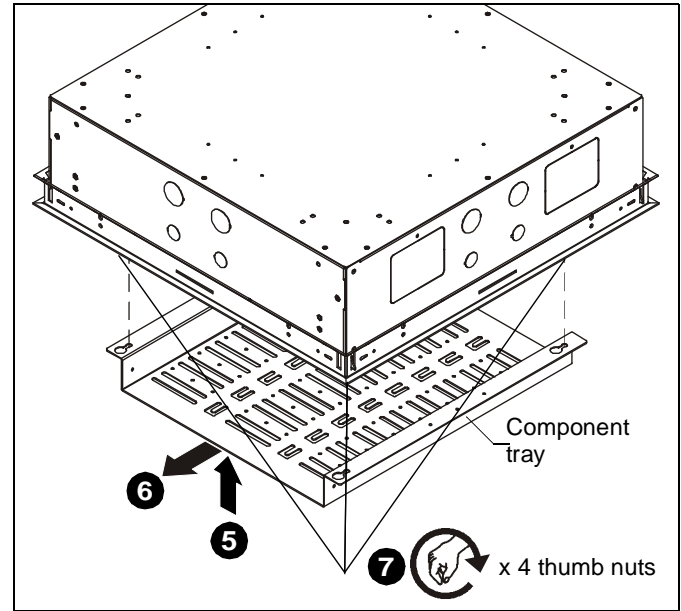


Figure 15



Our Mounts. **Your Vision.**

Chief, a products division of
Milestone AV Technologies

8800-002117 Rev01
©2015 Milestone AV Technologies
www.chiefmfg.com
07/15

USA/International	A 6436 City West Parkway, Eden Prairie, MN 55344 P 800.582.6480 / 952.225.6000 F 877.894.6918 / 952.894.6918
Europe	A Franklinstraat 14, 6003 DK Weert, Netherlands P +31 (0) 495 580 852 F +31 (0) 495 580 845
Asia Pacific	A Office No. 918 on 9/F, Shatin Galleria 18-24 Shan Mei Street Fotan, Shatin, Hong Kong P 852 2145 4099 F 852 2145 4477

