

STATUS: JL 09/14/2020 - RELEASED ON ECO: 500022439

TECH-001086

D

C


B

A

(*)NOTES:

- TYPICAL FUSION INTERFACES ARE 0.5" [15.9] DEEP

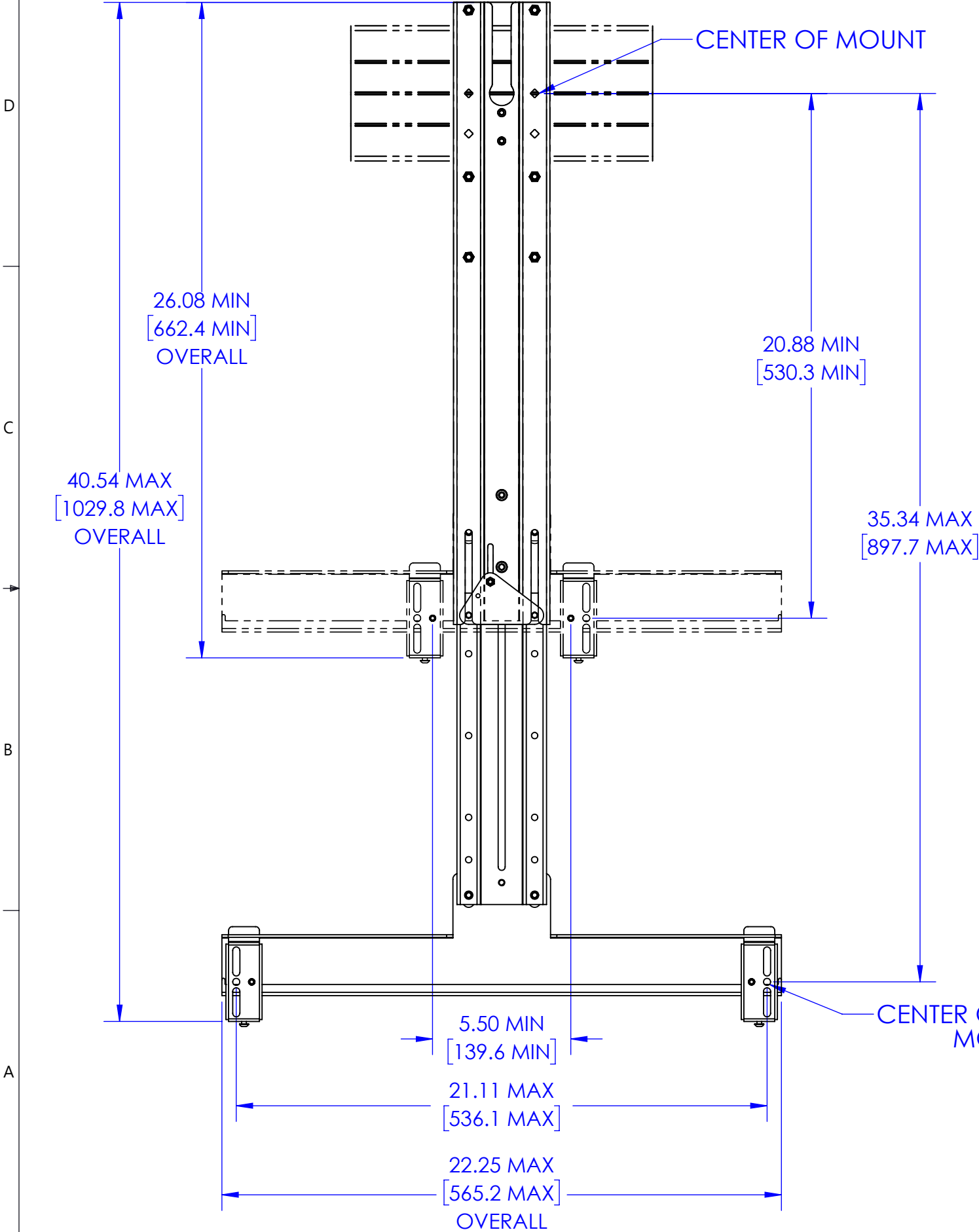
THE INFORMATION AND DESIGNS CONTAINED IN THIS DRAWING ARE CONFIDENTIAL AND THE PROPRIETARY PROPERTY OF MILESTONE AV TECHNOLOGIES NEITHER THIS DESIGN NOR ANY INFORMATION CONTAINED IN THIS DRAWING MAY BE REPRODUCED OR DISCLOSED TO OTHERS WITHOUT THE EXPRESS WRITTEN CONSENT OF MILESTONE AV TECHNOLOGIES.

CAD GENERATED DRAWING, DO NOT MANUALLY UPDATE.			 CHIEF <small>AN IRVING-CLOUD COMPANY</small>		6436 CITY WEST PKWY EDEN PRAIRIE MN, 55344 PHONE: 866-977-3901 FAX: 877-894-6918	
DRAWN BY	JL	7/30/2020				
ENG APPROVAL						
MFG APPROVAL						
QA APPROVAL						
			DESCRIPTION			
			FCA842 FUSION CENTER SPEAKER ADAPTOR, XL			
			MODEL NO.			
			FCA842			
SHEET 1 OF 2		SCALE 1:5	SIZE B	DWG. NO. TECH-001086		REV. 00

FUSION CEILING/CART MOUNT SETUP

STATUS: JL 09/14/2020 - RELEASED ON ECO: 500022439


TECH-001086



(*)NOTES:

- TYPICAL SINGLE DISPLAY MODELS HAVE INTERFACE DEPTHS .5" [12.7]
- TYPICAL DUAL DISPLAY MODELS HAVE INTERFACE DEPTHS 1.9" [48.3]
- FCA623 DUAL MONITOR INTERFACES ARE 1.4" DEEP [35.6]

THE INFORMATION AND DESIGNS CONTAINED IN THIS DRAWING ARE CONFIDENTIAL AND THE PROPRIETARY PROPERTY OF MILESTONE AV TECHNOLOGIES NEITHER THIS DESIGN NOR ANY INFORMATION CONTAINED IN THIS DRAWING MAY BE REPRODUCED OR DISCLOSED TO OTHERS WITHOUT THE EXPRESS WRITTEN CONSENT OF MILESTONE AV TECHNOLOGIES.

CAD GENERATED DRAWING, DO NOT MANUALLY UPDATE.			 6436 CITY WEST PKWY EDEN PRAIRIE, MN, 55344 PHONE: 866-977-3901 FAX: 877-894-6918	
DRAWN BY	JL	7/30/2020		
ENG APPROVAL			DESCRIPTION FCA842 FUSION CENTER SPEAKER ADAPTOR, XL	
MFG APPROVAL			MODEL NO. FCA842	
QA APPROVAL			SIZE DWG. NO. B TECH-001086	
SHEET 2 OF 2		SCALE 1:5	REV. 00	