
INSTALLATION GUIDE FOR
Da-Lite NET-100



Product Description

The NET-100 is an Ethernet adapter to the SCB-100 Serial Control Board for Da-Lite motorized screens and projector lifts. This Ethernet adapter allows remote control of a screen or lift through a TCP/IP connection.

The NET-100 is classified as a serial device server, which by definition means that it makes available to client computers the Da-Lite screen or lift as a serial device (enabled by the SCB-100). The NET-100 supports the suite of RS-232 commands developed under the SCB-100, and allows those commands to be issued by an Ethernet enabled computer or third party controller.

Installation

When connecting the NET-100, there are three connections that must be made to the SCB-100 for proper operation: Power +12Vdc, RS-232 Communication and Ethernet.

NOTE: If you ordered your screen with a built-in SCB-100 it will come equipped with a 11-pin phoenix connector. The NET-100 will be equipped with a 2-pin plug and 3-pin plug for connection. The 2-pin plug will plug into #10 and #11 and the 3-pin plug will plug into #4, #5 and #6. (See Fig. 1)

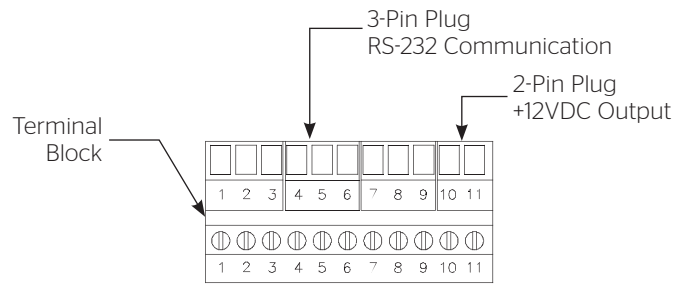


Figure 1

If you did not order your screen with a built-in SCB-100, remove the 2-pin and 3-pin connectors from the NET-100. Refer to (Fig. 2)

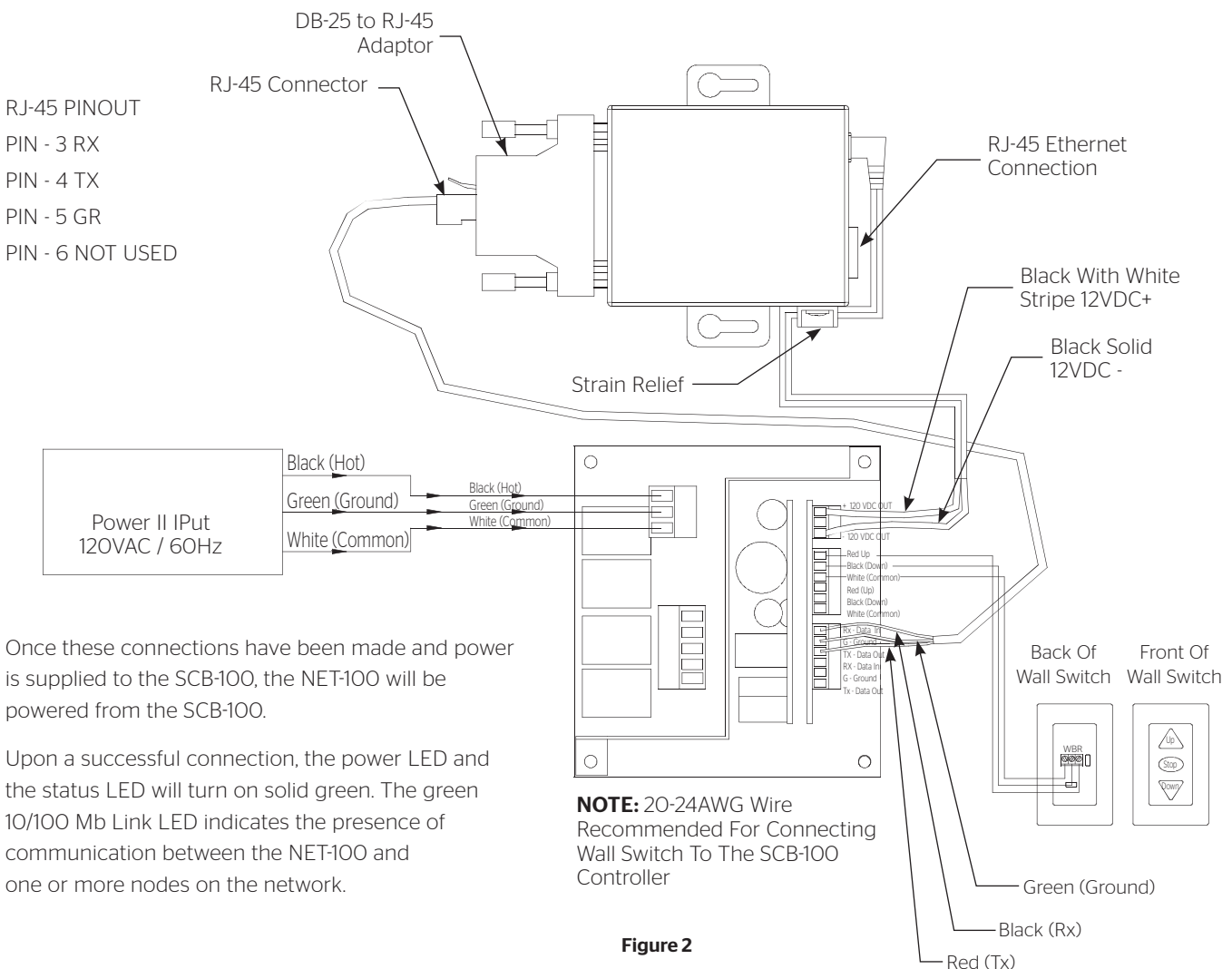


Figure 2

Once these connections have been made and power is supplied to the SCB-100, the NET-100 will be powered from the SCB-100.

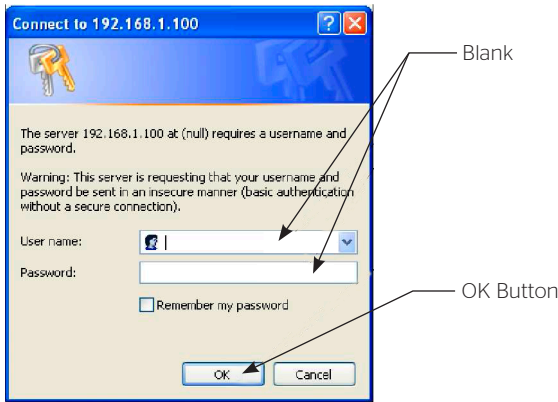
Upon a successful connection, the power LED and the status LED will turn on solid green. The green 10/100 Mb Link LED indicates the presence of communication between the NET-100 and one or more nodes on the network.

Configuration

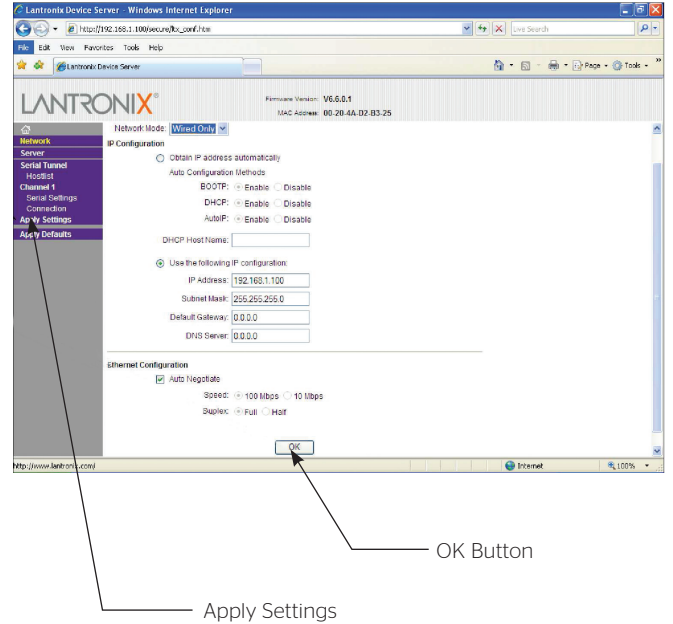
The NET-100 is designed for simple, transparent installation and configuration. By default the NET-100 is shipped with DHCP disabled. The following IP address is assigned to the NET-100.

IP Address: 192.168.1.100
Subnet: 255.255.255.0

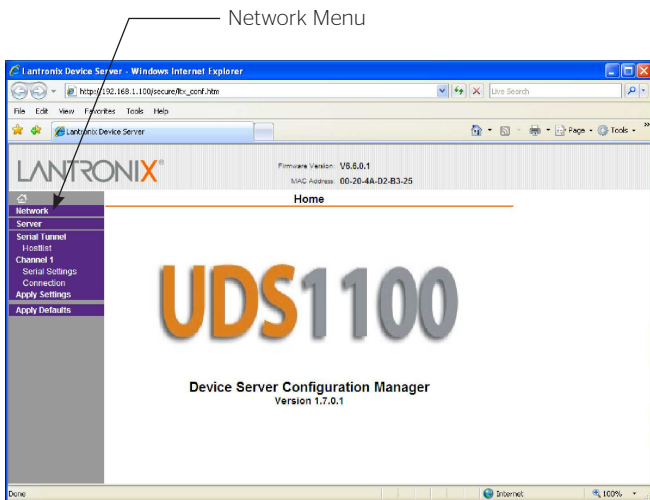
To configure the network settings, type the IP address into your browser. It will open a new page with the setup profile. A new window will pop up asking for a user name and password. Leave the user name and password field blank and press the OK button.



For DHCP click on "Obtain IP address automatically" and type in the DHCP HostName. For Static IP leave the option "Use the following IP configuration" clicked and type in the IP address and Subnet Mask. Then click the "OK" button. Finally click on the "Apply Settings" in the left menu.



The new window will contain the configuration browser program. The menu will be located on the left side of page. Click on "Network".



Usage

To control the screen or lift connected through the SCB-100 to the NET-100, you will need to create a TCP/IP Winsock connection through HyperTerminal or other emulator program.

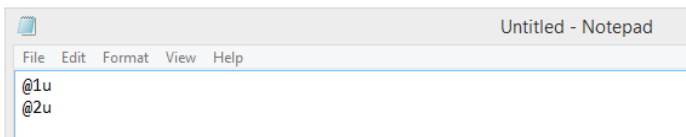
1. You will be required to create (4) text files in a text editor like Notepad. They will be named Up, Stop, Down and Poll.

Commands

- @1u - Motor 1 up
- @2u - Motor 2 up
- @1d - Motor 1 down
- @2d - Motor 2 down
- @1s - Motor 1 stop
- @2s - Motor 2 stop
- @P - Poll (Reports Relay Status)

NOTE: All commands need to be sent as a continuous string

Example command text file for Up:

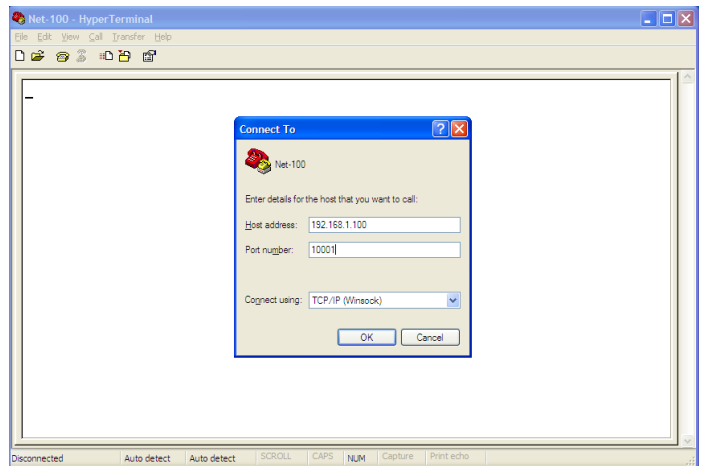


The above example will activate Motor 1 and Motor 2 simultaneously.

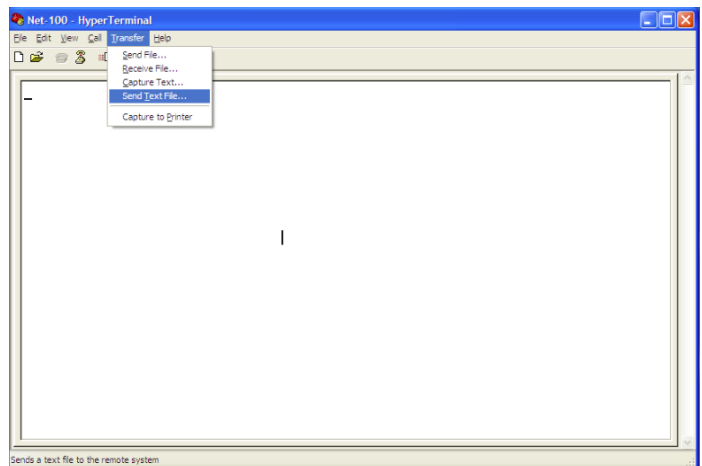
2. Create a TCP/IP Winsock connection through HyperTerminal or other emulator program.

Host Address: 192.168.1.100

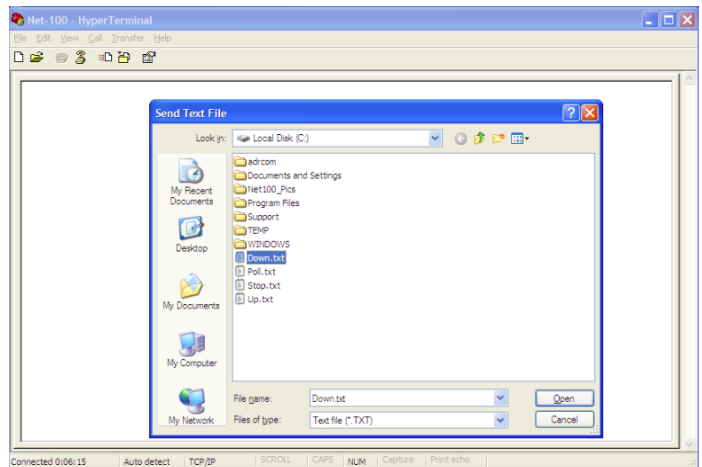
Port Number: 10001



Click "Transfer" and "Send Text File"



Browse to file location and select appropriate text file and click "Open"



SCB-100 unit will actuate command that was sent.



A Milestone AV Technologies Brand

3100 North Detroit Street
Warsaw, Indiana 46582
P: 574.267.8101 or 800.622.3737
F: 574.267.7804 or 877.325.4832
E: info@da-lite.com
www.da-lite.com

DL-0397 (Rev. 1) 03.16

© 2016 Milestone AV Technologies LLC. Printed in U.S.A.