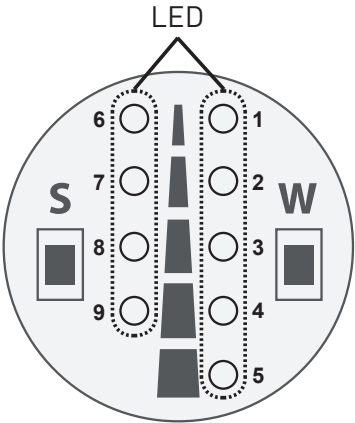


RIP868 Repeater



> BASIC OPERATION

BUTTON	QUICK PRESS	LONG PRESS
S	Delay time display	Entry into the programming function
W	Delay time adjustment	
S+W		Device reset



After matching a remote control to the repeater, it will repeat the commands OPEN, CLOSE and STOP with an adjustable delay time (the other commands will NOT be repeated). If more buttons are pressed consecutively during the delay time (notified by the LED 9 switched on and steady) only the last one received will be repeated (the actual transmission of the command will be notified by a rapid flashing of LED 9).

> Programming procedure

The combination of the remote control allows the repeater to learn the code that has to be repeated. Make sure that the remote control combined with the repeater is memorized also in the memory of the motors to be controlled.

If the repeater has NOT a paired remote control, it does not allow the adjustment of the delay time and reports its status by cyclically turning on the led:
(LED: 1 > 2 > 3 > 4 > 5 > 9 > 8 > 7 > 6) .

To pair your remote control follow this procedure:

Matching TX / repeater:

- 1) Press and hold button S of the repeater.
- 2) When the LEDs start to move quickly, release the button S.
- 3) Within 8 seconds, press the "UP" button of the remote control to match.
- 4) The LEDs flash in order to signal the correct storage.

It is possible to combine a maximum of 31 remote controls to the repeater. You can not associate a remote control with groups of active channels. In case you want to associate more than one channel to the same remote control, they have to be associated individually.

> THE RESET PROCEDURE

The reset procedure disassociates ALL remote controls previously associated with the repeater and returns the setting of the delay time to the default value (see table for the delay times).

Repeater RESET:

- 1) Press and hold the repeater buttons S + W.
- 2) When all LEDs start blinking, release the buttons S and W.
- 3) If the procedure was successful, the LED will light up cyclically
(LED: 1 > 2 > 3 > 4 > 5 > 9 > 8 > 7 > 6) to indicate that no remote control is associated with the repeater.

> ADJUSTING THE DELAY TIME

Briefly press W to change regulation.

The repeater will display the active regulation for 8 seconds. The adjustment is displayed even after repeating a command.

The LEDs 1, 2, 3, 4 and 5 indicate the selected setting. The deactivation of the delay time is not taken into account.

Adjustment	LED	1	2	3	4	5
2 seconds		ON	OFF	OFF	OFF	OFF
3 seconds (Default value)		ON	ON	OFF	OFF	OFF
4 seconds		ON	ON	ON	OFF	OFF
5 seconds		ON	ON	ON	ON	OFF
6 seconds		ON	ON	ON	ON	ON

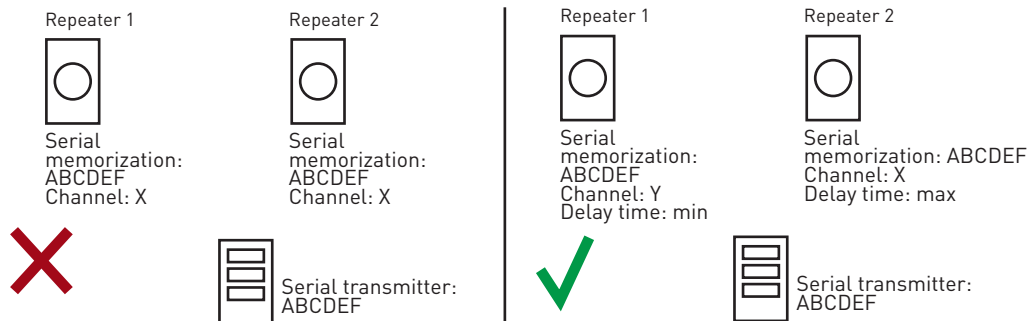
> INSTALLATION



> WARNINGS

Below you will find a list of the installation instructions that need to be followed in order to ensure the proper functioning of the device.

- 1) In case of the installation of two repeaters, it is **ABSOLUTELY FORBIDDEN** to associate the same remote control and the same channel on both repeaters.
- 2) In case of installation of two repeaters, you can associate the same remote control but with different channels on both devices and adjusting different delay times (one to the minimum value and one to the maximum value).
- 3) It is **ABSOLUTELY FORBIDDEN** to install 3 or more repeaters.
- 4) During motors programming, repeaters must be switched off. Turn them on again only after having completing all programming procedures.




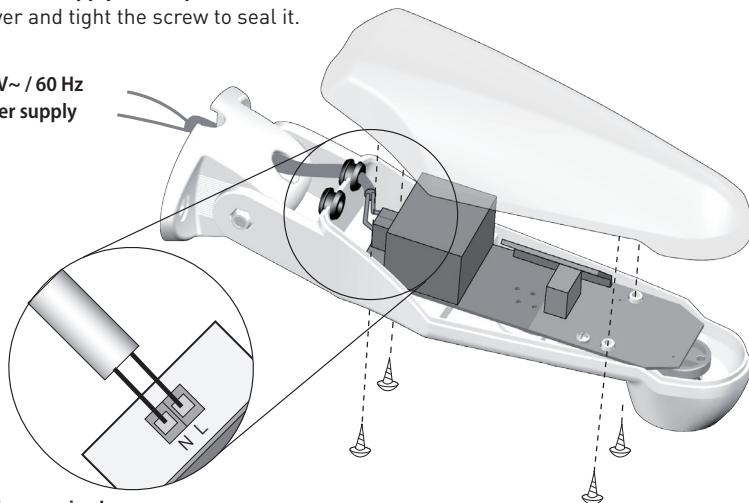
> WIRING CONNECTION

1. Open the top cover by the 4 screws on the bottom.
2. Connect the power line as described below.

Check that the power supply corresponds to the label data.

3. Close the top cover and tight the screw to seal it.

 120 V~ / 60 Hz
Power supply



Additional Accessories required:

2-wire cable that meets the standards of the country in which it is installed