



AV

CEDIA EXPO  
2019

RESIDENTIAL SOLUTIONS



**Legrand | AV Residential Solutions** unites the industry's leading brands in infrastructure, networking and smart home systems to help create amazing AV experiences for you and your customers. Together we provide reliable, thoughtfully-designed products, superior service and comprehensive solutions to help simplify installation and integration. Visit **CEDIA Booth #905** to learn more about:

Partnering with our knowledgeable sales and support experts featuring a deep field team designed to engage and support our customers.

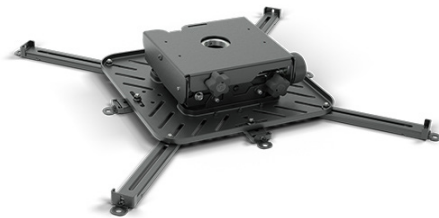
Comprehensive solutions from our industry leading brands designed to increase dealer profitability.

Unmatched service focused on helping Custom Integrators develop seamlessly integrated solutions for today's Smart Home.

Our dedication to partner with industry leading control brands and smart home products to provide uninterrupted interoperability.

TRANSFORMING SMART HOMES **TOGETHER**





## SUPPORT LARGE PROJECTORS WITH A LOWER PROFILE

The all-new VCT Series Projector Mounts are designed to install quickly while maintaining a sleek aesthetic. Lighter and slimmer than its predecessor, the VCM, the VCT works well with projectors between 50-150 lbs (22.7 – 68 kg), perfect for high-end home theaters.

■ [Learn more about the new VCT Projector Mounts](#)



## TAKE IT OUTSIDE WITH CHIEF

Outdoor AV installations bring new life to residential spaces. Chief's line of award winning outdoor-rated TV mounts expands from tilting, swing arm, and pedestal/ceiling mounts. All of Chief's outdoor mounts are designed with layers of protection against rain, humidity and UV exposure. The new pedestal/ceiling mounts are also engineered with withstand high winds.

■ [Check out Chief's entire outdoor TV mount offering](#)



## STREAMLINED STORAGE

Keep power, components and cabling organized and out of site with Chief's in-wall storage solutions. Available in three sizes, the recessed storage boxes can be added pre- or post-construction and are listed to UL2416 and UL2442 allowing safe storage of ITE equipment.

■ [Learn more about Chief's in-wall storage solutions](#)



## PARALLAX PURE: REDEFINED PARALLAX ALR SCREENS

The Da-Lite Parallax portfolio of premium **Ambient Light Rejection (ALR)** screen surfaces are now part of the Parallax Pure family. Parallax Pure is a line of True Optical ALR surfaces, made up of our existing Parallax surfaces, **Parallax 0.8**, **Parallax 2.3** and **Parallax UST 0.45**. Ideal for living spaces where there is natural light, Parallax screen technology mimics the look of a television when it is on and when it is off, but without the glare from windows or lighting fixtures.

■ [Learn more about the Parallax Pure family of screen surfaces](#)



## DELIVER HIGH VALUE IN LARGE-SCALE PROJECTIONS WITH STRATOS 1.0

Adding to their industry-leading **Ambient Light Rejecting (ALR)** surface portfolio, Da-Lite is proud to introduce Parallax Stratos 1.0. Parallax Stratos 1.0 offers the freedom to design seamless Ambient Light Rejection screens up to 16 feet in height in tensioned electric and fixed frame options. Parallax Stratos is a high value, contrast-based ALR surface that rejects up to 80% of ambient light with 1.0 gain for standard throw projectors (1.0:1 minimum throw).

■ [Learn more about Da-Lite's newest screen surface](#)

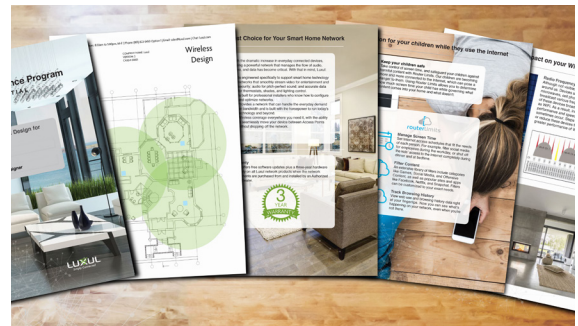




## IT'S GOT THE LOOKS, AND THE BRAINS

So you've heard about the XAP-1610, but have you seen it? Featuring 4x4 Wave 2 technology; it has the coverage, power, and speed your network needs. The best of our indoor APs, you're gonna want to see it to believe it.

■ [Learn more](#)



## INTEGRATORS SCORE BIG WITH LUXUL SOLUTIONS

The Luxul Customer Assurance Program provides installers a free, guaranteed, certified network design, taking the stress of designing a reliable network off their shoulders. Installers simply visit: [www.luxul.com/assurance-program.aspx](http://www.luxul.com/assurance-program.aspx) and register their project; if the network doesn't perform or provide full coverage, we'll make it right at no cost.

■ [Installers simply click here](#)





## AND THE #1 AV ENCLOSURE IS...

The BGR Series 23" wide AV enclosure. The BGR (Breakthrough Next-generation Rack) is now the #1 selling Middle Atlantic enclosure, with 187,000 rack units installed in AV projects last year alone. The BGR Series goes beyond the traditional rack enclosure with innovations that allow integrators to quickly mount, maintain, and service a variety of system components with ease and reliability. This 2019 CEDIA Hall of Fame contender was designed with the integrator in mind and solves many of the challenges they commonly face.

■ [Learn more about the BGR Series](#)



## MOVING FORWARD WITH RACK TECHNOLOGY

New to CEDIA 2019, The Forward Family of Rack Solutions is designed around an innovative new rackrail and our patented universal mounting pattern that allows blank and vent panels, cable management, lighting and other options to be quickly installed without tools. Compatible with the BGR Series, our #1 selling rack, Forward will allow integrators to easily achieve reliable rack layouts with less time, labor and hardware. Come see it to believe it at our booth!

## NOW AVAILABLE ARE A NEW AND EXCLUSIVE LINE OF PRO-SERIES PLAYERS



Purpose-built for custom audio installations, these premium rack-mount Players deliver dynamic high-fidelity sound to three listening zones and feature installer-inspired solutions to maximize efficiency and simplify installation. When performance and profitability matter - audio professionals choose Nuvo.

■ [Check Out the Exclusive Pro-Series Players](#)

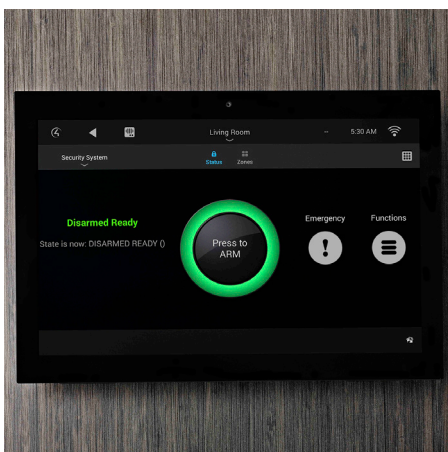
## FOR THE FIRST TIME AT CEDIA, CHECK OUT THE NEW LINE OF ARCHITECTURAL SUBS & SUB AMPS



When traditional powered subwoofers won't work for your installation, the space-saving, discreet design of the In-Ceiling and In-Wall Passive Subwoofers is an ideal fit. They're designed to pair with the coordinating Subwoofer Amplifiers to seamlessly integrate with almost any audio system. All Architectural Passive Subwoofers feature a lifetime warranty.

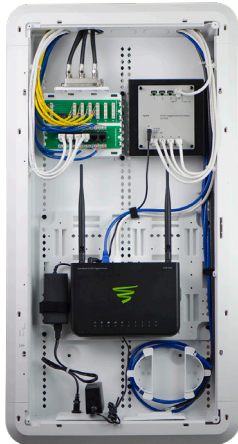
■ [Learn more here](#)

## SAVE TIME AND SIMPLIFY INTEGRATION WITH NUVO THIRD-PARTY DRIVERS



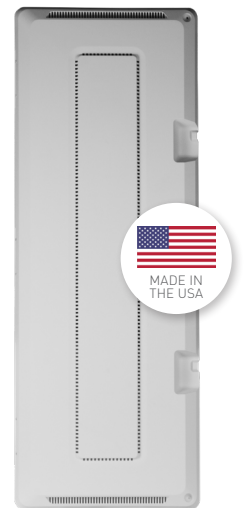
With pre-written drivers, it's easy to integrate the exceptional sound quality of Nuvo into advanced home automation systems from Vantage, Control4, Elan, RTI, Crestron, URC, and more.

■ [Explore All the Third-Party Control Drivers](#)



## BUILD A SOLID FOUNDATION TO SUPPORT TODAY'S CONNECTED HOME TECHNOLOGY

Soon-to-be proudly resourced in the USA with customer experience design enhancements, **the On-Q line of Wi-Fi ready plastic enclosures** make it easy to consolidate and distribute wired and wireless services throughout the home from a centralized location. Along with enclosures, On-Q's professional HDMI cables, AV connectivity and home theater solutions help simplify installation, boost performance and ensure ease of use.



## SIMPLE THIRD-PARTY INTEGRATION WITH NEW RF SMART LIGHTING CONTROL IP DRIVERS

Save time and simplify integration of our radiant and adorne RF Smart Lighting Control Systems with four new IP-based drivers. These prewritten drivers allow the LC7001 Whole House Lighting Controller to work as a bridge that can communicate with Control4, Elan, URC, and RTI systems.

■ [Learn more](#)

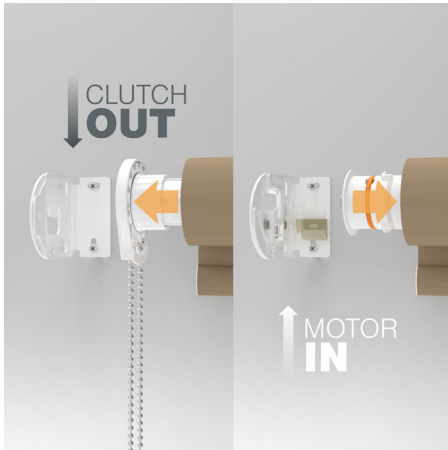
## THE BRILLIANT CHOICE FOR SMART LIGHTING CONTROL

RF Smart Lighting Control is the robust and reliable solution that you can always count on. Available in the radiant and adorne collections, choose from a wide variety of device types to truly customize your project. And with simple installation, Tru-Universal dimming, and seamless integration, it's the perfect choice for professional projects.

■ [Explore RF Smart Lighting Control](#)







## THE BIGGEST PLUS IN PREMIUM SHADING

Manual to motorized in minutes. QMotion Qbasic+ is the field upgradable solution offering ultimate flexibility to integrators, MDU property managers, and home owners. Upgrades in minutes without the need of changing fabric or major bracket reinstalltion. Upgrades on a window-by-window basis, giving a buyer more choices at initial purchase. All with QMotion's exclusive innovations, including manual override, internal batteries and motors, and counterbalanced design.

■ [Add the Plus, Qbasic+ Manual to Motorized in Minutes](#)



## THE CHOICE IS YOURS

You wanted more fabric choices. We delivered! With selections from classic linens to more modern variegated patterns, QMotion's latest improvements include over 100 new fabric choices of style, texture, and color to match your customer's varied tastes. New fabric lines include decorative light-filtering and matching room-darkening collections, allowing you to see the same matching design throughout an entire home while still providing the best, beautiful solution for each individual room.

■ [Check out the newest collections](#)



## DISCOVER BEAUTY IN MOTION

QMotion advanced shading systems are simple to install and easy to use, with superior functionality to operate exquisite window coverings quietly and more efficiently than any other shade in the market. Our distinctive designs and advanced engineering deliver unmatched luxury. Experience advanced shading today with one of QMotion's award-winning systems.

■ [Discover Beauty in Motion](#)

## INTRODUCING ADVANCED FULL-MOTION PREMIUM TV MOUNTS

Over the past decade, flat panel TVs have become slimmer and lighter, but TV mounts have largely remained the same. With the introduction of the SANUS Advanced Full-Motion Premium TV Mounts, that has changed. The first of their kind, these new TV mounts unite high-end performance with high-end design. The result is a next-generation mount that thoughtfully incorporates the TV into the home in a way that is both functionally and aesthetically modern.

■ [View the entire line](#)



## SANUS BLACK SERIES

The SANUS Black Series is an exclusive line of TV Mounts available by invite only to authorized dealers. All SANUS Black TV Mounts have been designed and engineered based on input direct from custom installers. These mounts are easier to use, easier to install and most importantly, easier to sell. No more price shopping or deal hunting from clients because these mounts are only available to authorized dealers.

■ [Become a SANUS Black Series dealer](#)



## HEAR THE DIFFERENCE, SEE THE STYLE

SANUS provides a portfolio of versatile speaker solutions that create an optimal listening experience and sleek look your customers will love. SANUS speaker stands, mounts and accessories are designed to seamlessly integrate speakers and smart devices into the home and accommodate any sort of system arrangement, be it home theater, surround sound or ambient listening.

■ [See our complete line of solutions for Sonos](#)





## LIGHTING FOR LIFE

Lighting is becoming truly human-centric. Replicating a slice of natural light can support Circadian adaptation, improved sleep, and increased productivity. Stop by CEDIA booth 905 and learn more about our engineered end-to-end, human-centric lighting solutions for Luxury Spaces.

■ See more



## YOUR WINDOW TO THE VANTAGE WORLD

Vantage continues to develop market leading on-wall keypads and stations that turn heads. The appeal of this new station from Vantage will excite homeowners and designers. EasyTouch Glass is our newest keypad design, a nod to one of the world's oldest and most versatile materials. Available for wireless and full-line applications.

## GET IN, GET OUT, GET PAID

Wireless control is one of the fastest growing categories in the CI Channel. Homeowners are demanding integrated remodel and renovation projects that elevate the end-user experience. Simple wireless products offer easy in out for the integrator, less disruption for the homeowner, and installations that reflect the reliability and quality of Vantage's heritage. Ask about rapid wireless certification and our Wireless153045 promotion.

■ See more

