

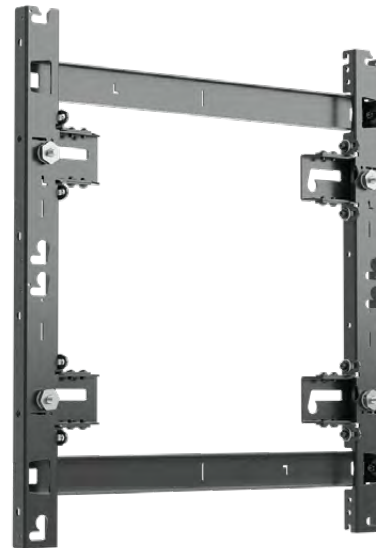
# LED VIDEO WALL MOUNTING SYSTEM

## TiLED™ Leyard TVF Series

### Limitless Effortless Design

FOR LEYARD TVF SERIES SERIES

Chief's new TiLED™ Series is a modular, LED mounting system designed to support creative video wall configurations and simplify specification. The system includes three mounts supporting 2, 3 or 4 LED displays that connect together to form a continuous video wall.



- Integrated plumb adjust of 0.75" (19 mm) compensates for imperfections in the wall
- Depth range including panel between 3.59 – 4.34 (91 - 110 mm) for low-profile result
- Keyhole slots allow for fast and easy mount installation
- Offset display mounting slots protect LED sides from damaging friction
- Modular system supports creative video wall design and simplifies specification
- Standard, off-the-shelf solution set means product is stockable and ready to ship – no custom lead times



# LED VIDEO WALL MOUNTING SYSTEM

TiLED™ Leyard TVF Series



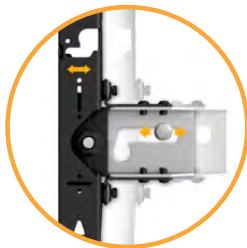
EASY TO SPECIFY.



EASY TO ORDER.



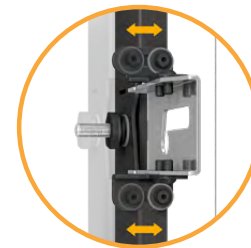
EASY TO INSTALL.



X-axis lateral shift adjustments enables perfect LED positioning



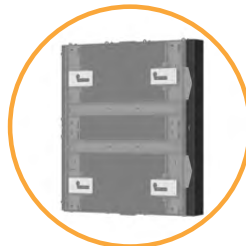
Y-axis vertical shift adjustments provide perfect cabinet-to-cabinet alignment



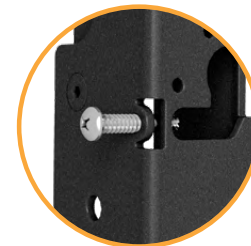
Z-axis plumb adjustments compensate for wall imperfections to achieve perfectly flat mounting surfaces



Friendly Clearances provide the needed freedom for aligning fine pixel pitch LED displays



Low-profile design accommodates minimum depth wall requirements



Side Lock Screws lockout LED configuration eliminating cabinet movement

## SPECIFICATIONS

Model	Configuration	Height (A)	Width (B)	Depth Range (C)	Depth Range with Display	Plumb Adjustment	Mounting Point Distance (D)	Center Opening (E)
TIL1X2PT	1x2	26.41" (671 mm)	23.78" (604 mm)	1.09 - 1.84" (28 - 47 mm)	3.59- 5.34" (92-110 mm)	0.75" (19 mm)	12.04" (306 mm)	17.6" ( 447 mm)
TIL1X3PT	1x3	39.8" (1011 mm)					25.43" (646 mm)	30.99" (787 mm)
TIL1X4PT	1x4	53.19" (1351 mm)					38.82" (986 mm)	44.39" (1128 mm)

# LED VIDEO WALL MOUNTING SYSTEM

## TiLED™ Leyard TVF Series

## ACCESSORIES



TILVABPT  
Vertical Connectors Bracket



PAC525, PAC526 & PAC527  
In-Wall Storage Boxes

